

## 504GZ Shekou & Guangzhou in 1 Day

- Approx. 12 hours (not include hotel pick up time)
- Daily Morning Departure
- Hotel pick-up time: 6:40 am - 7:05 am
- Actual pick-up time will be given at the time of reservation
- Itinerary may be changed subject to actual traffic condition.
- Tour fees include air-conditioned sightseeing coach, escorted and guided services, ferry ticket to Shekou, train ticket to Hong Kong, lunch and China Visa.
- Please bring along passport for immigration.

**Shekou** is located in the southern part of Nantau Peninsula, and an important part of Shenzhen which is named the first Special Economic Zone of China. Nowadays Shekou has become one of the city's major scenic spots drawing for tourists.

### Attractions:



#### **Kindergarten**

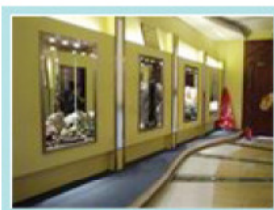
Enjoy the unusual experience of visiting a local kindergarten. Kindergarten is closed on Saturday, Sunday and school holidays. It will be replaced by The Legend of NuWa\*. NuWa is the goddess of creation in China and the state of NuWa is

also the landmark of Shekou city.



#### **Free Market**

Visit one of the free markets in SHEKOU, have an insight of local people's bargaining power in food markets.



#### **Mineral Museum**

Here you can appreciate some hand-crafts products and get more knowledge about geologic mineral. In the museum, you can see the World famous Terra-cotta warriors; these priceless relics have been loaned from the famous excavation site in

Xian.

**GuangZhou** is the capital city of Guangdong Province and the largest city in Southern China with a population of over 10 million. Its beautiful gardens, long history of culture, numerous historic relics and unique 'Guangzhou-style' cuisine, have contributed to its status as one of the most famous tourist centers of China.

Attractions:



**Dr. Sun Yat Sen's Memorial Hall**

Built in 1931 with funds donated by patriotic overseas Chinese and local people, this beautiful memorial theatre is used for rallies and cultural performances.



**Temple of the Six Banyan Trees**

This Buddhist temple owes its name to the Banyan trees that once flourished in its courtyards during the 12 century.



**Chen Clan Academy**

This ancient complex was served as the hall for ancestor worship. It is now listed as an important historical site under state protection.



**Jade Shroud Silk Thread**

Visit the Western Han Tomb of the Nanyue King. The tomb master was wearing a garment made of jade pieces which was the earliest one discovered in China so far.